

Water Governance & Law In case of Japan

3 July, 2009

*A Regional Consultation Workshop on Improving
Water Governance*

*Lee Kuan Yew School of Public Policy
National University of Singapore*

*Tadashige Kawasaki
Asian development Bank Institute*



Contents

I. Experience of Japan

- i Integrated Water Resources Management Process*
- ii Water Resources Management (WRM) by law*
- iii Many measures to implement WRM*

II. Implementation of Law

III. New Challenges

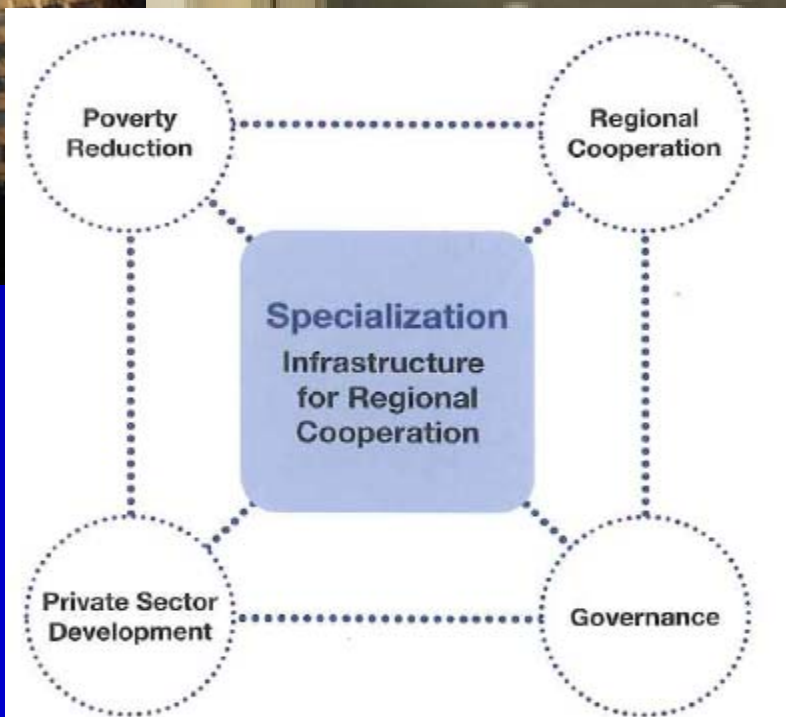
What's the **Asian Development Bank Institute** ?

[Outline]

- Established in December 1997
- A subsidiary of the Asian Development Bank (ADB)
- 55 staffs from 16 countries

[Purpose]

- Identification of effective development strategies
- Improvement of capacity for sound development management



Relationship ADBI and Water



- **Network of Asian River Basin Organization** was initiated by Asian Development Bank (ADB), ADB Institute (ADBI) and Japan Water Agency (JWA).
- Formally announced by signing the LOI on March 21, 2003, during the 3rd World Water Forum at Kyoto-Shiga, Japan.
- Established on February 24-26, 2004 in Malang, Indonesia



Letter of Intent for NARBO



1st NARBO General Meeting in 2004

Ownership is the basis of network activity

Goal and Objective of NARBO



Goal

To help to achieve

Integrated Water Resources Management (IWRM) in river basins throughout Asia.

Objective

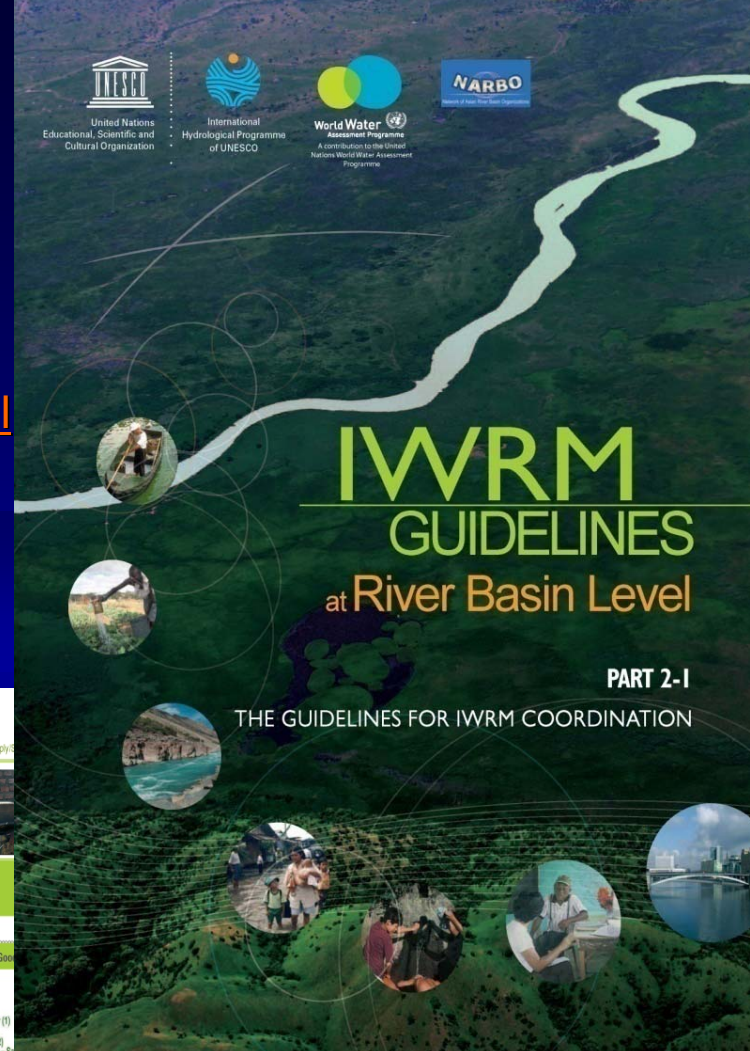
To strengthen the capacity and effectiveness of RBOs in promoting IWRM and improving water governance, through training & exchange of information and experiences among RBOs and their water sector agencies & knowledge partner organizations.



IWRM Guidelines

<http://www.unesco.org/water/news/newsletter/214.shtml>

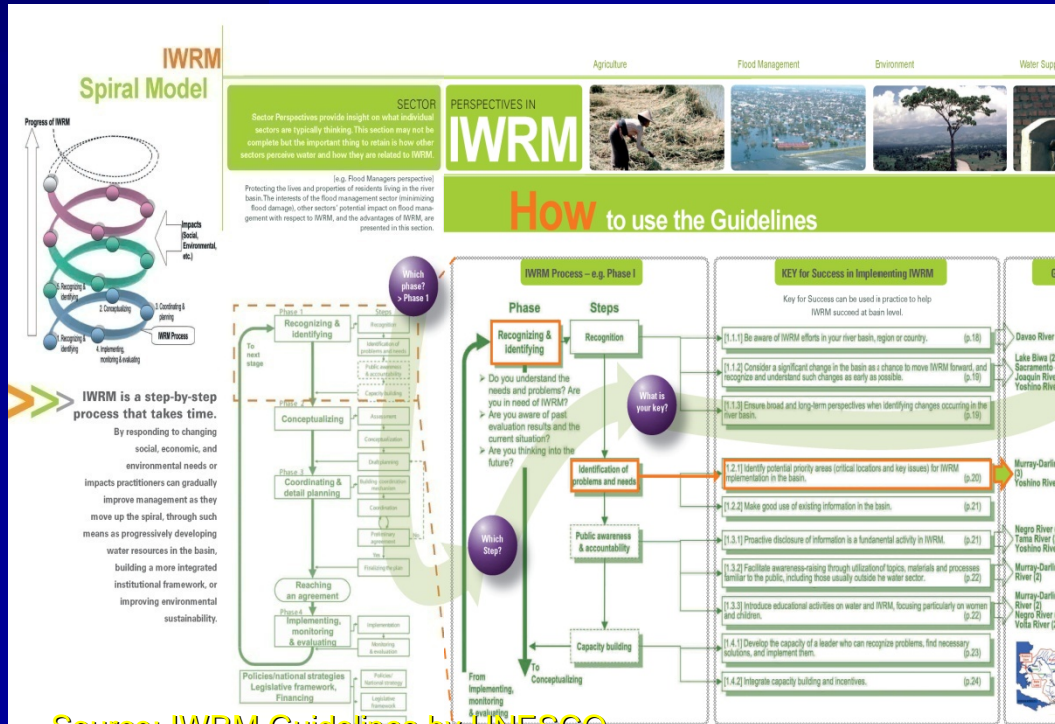
<http://www.narbo.jp/>



IWRM GUIDELINES at River Basin Level

PART 2-1

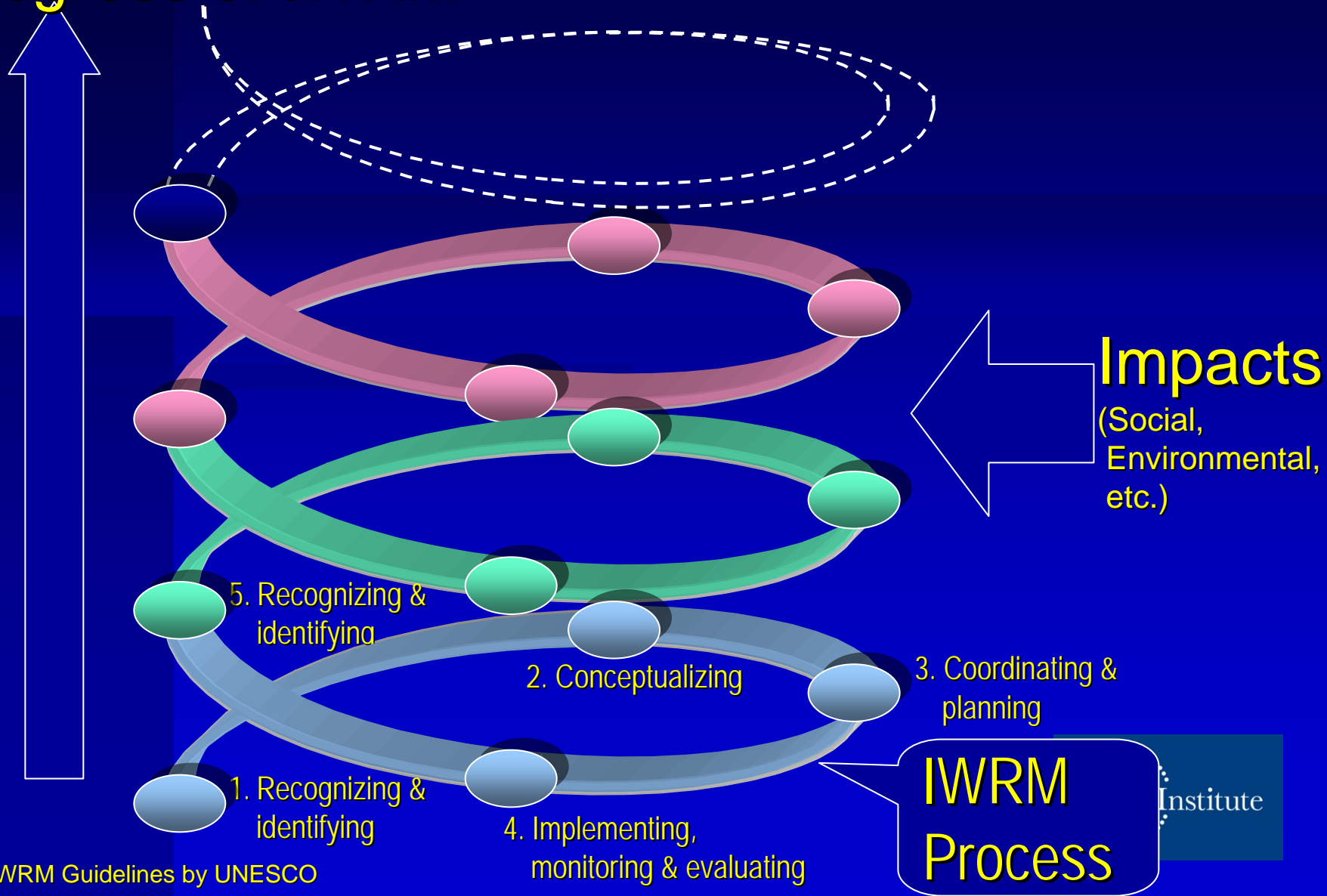
THE GUIDELINES FOR IWRM COORDINATION



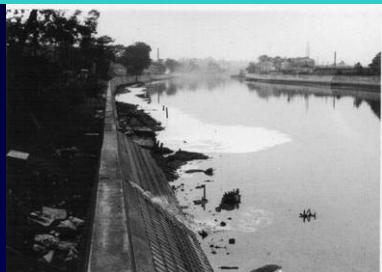
Source: IWRM Guidelines by UNESCO

IWRM Process "IWRM Spiral" concept model

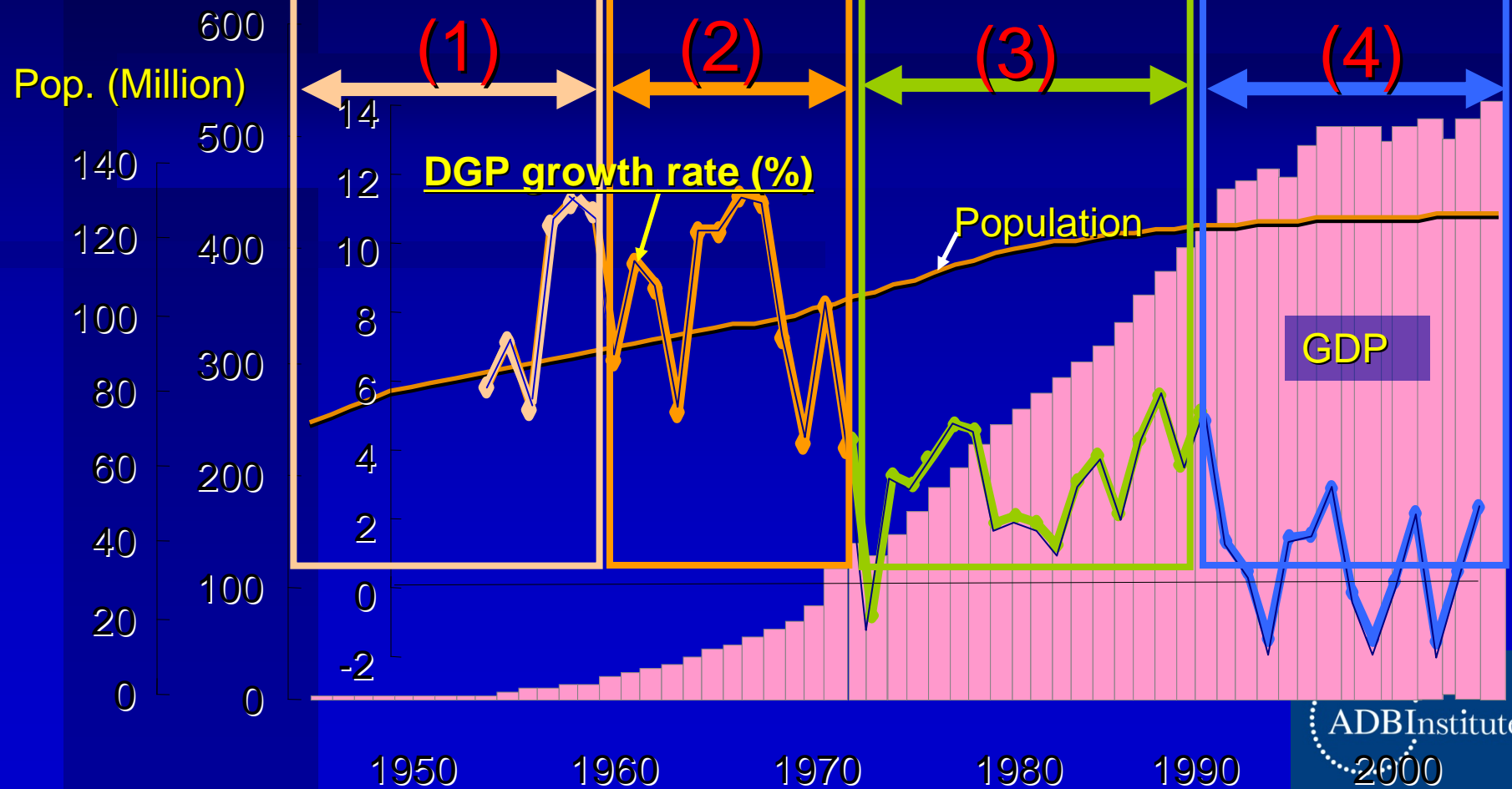
Progress of IWRM



4 Periods according to the change of Economic Condition



GDP (Trillion YEN)



(1) The Postwar Reconstruction Period (1945 – 1960)

Tokyo, 16 Aug., 1945



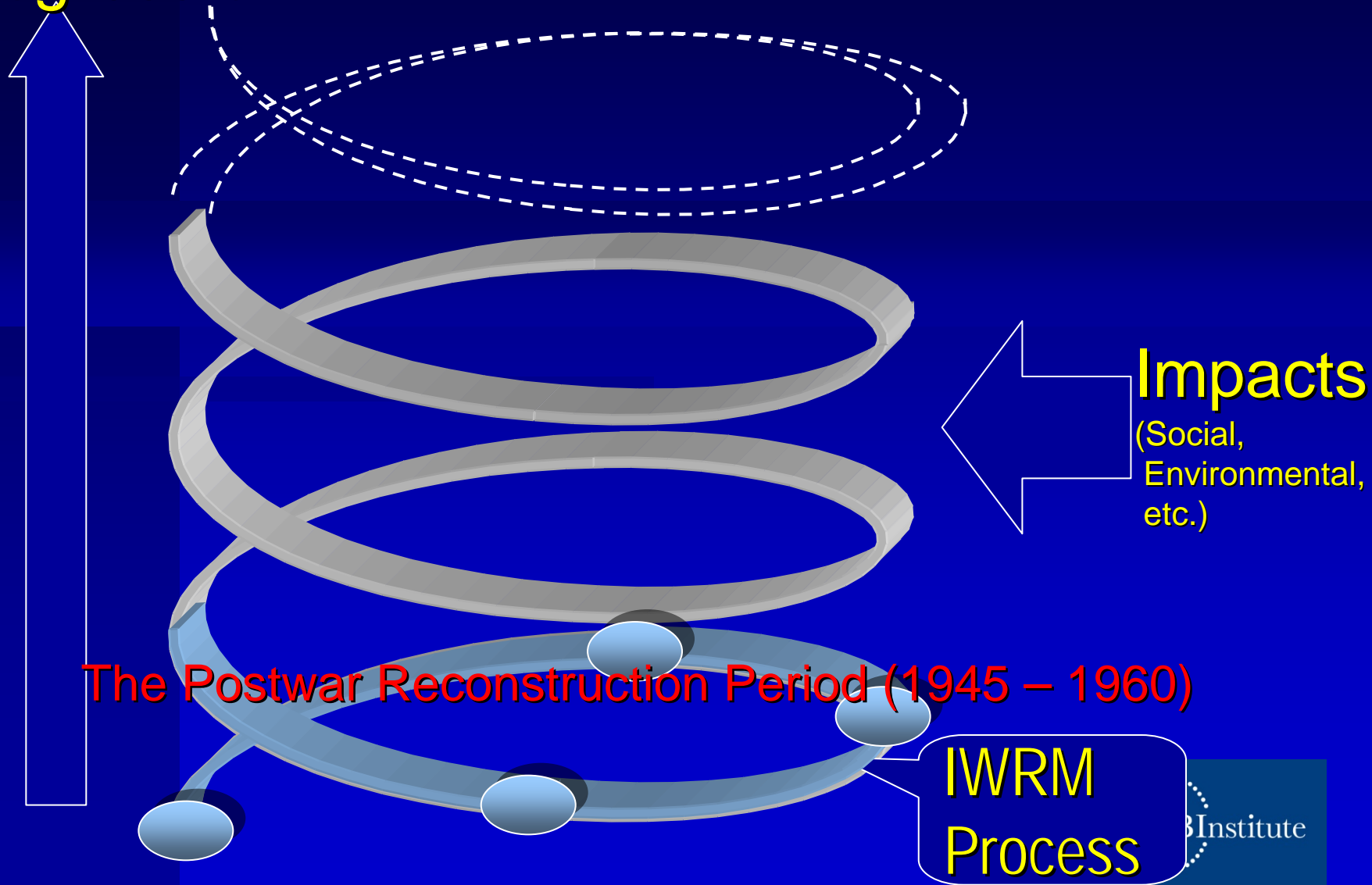
Flood caused by typhoon (1947)



1. *Land Improvement Law (1947)*
2. *Comprehensive National Development Law (1950)*
3. *Electric Power Development Promotion Law (1952)*
4. *Waterworks Law (1957)*
5. *Specified Multipurpose Dam Law (1957)*
6. *Industrial Water Supply Business Law (1958)*

"IWRM Spiral" concept model

Progress of IWRM



(2) High-Level Economic Growth Period (1960 - 1973)

Yokkaichi Air Pollution



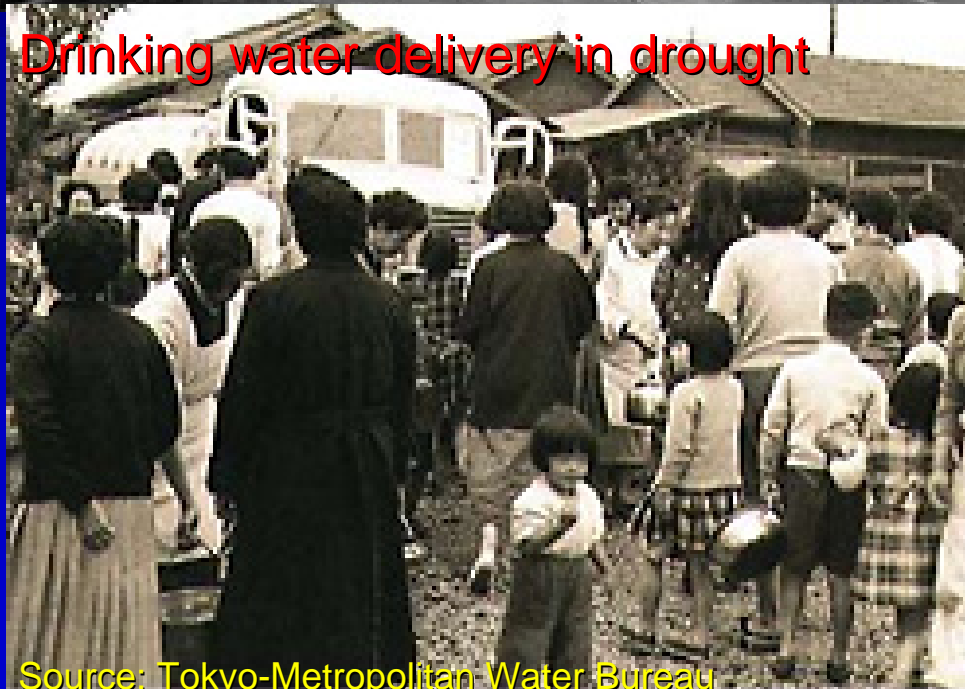
Source; Yokkaichi-city

Tokyo Olympic (1964)



Source; Japan Olympic Association

Drinking water delivery in drought



Source; Tokyo-Metropolitan Water Bureau

River Pollution of Tama river



Source; MLIT, Government of Japan

(2) High-Level Economic Growth Period (1960 - 1973)

Promotion of water resource development

1. Water Resources Development Promotion Law (1961)
2. Water Resources Public Corporation Law (1961)
3. Revision of River Law (1964)

Measures to prevent ground subsidence

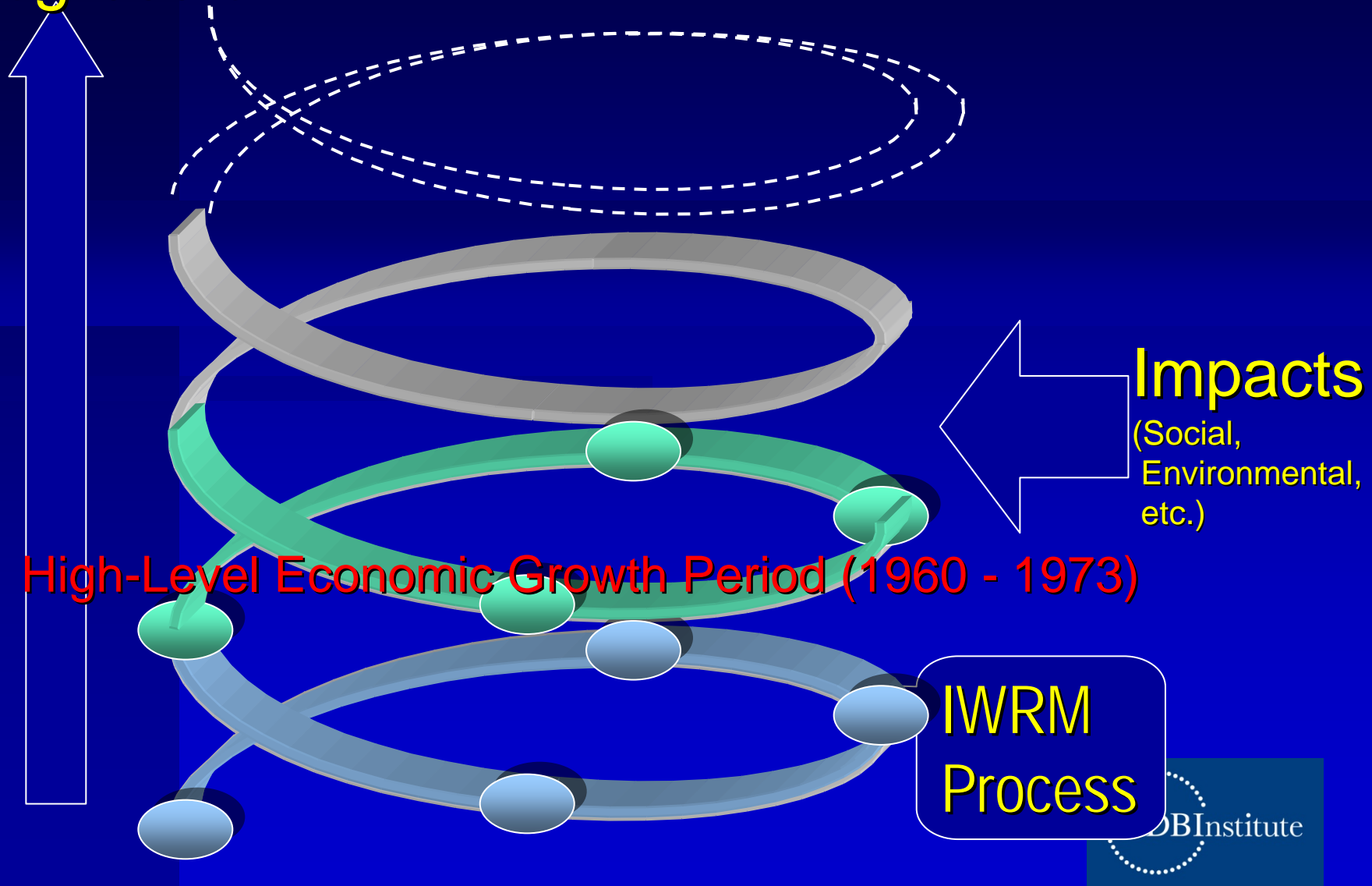
4. Industrial Water Law (1956)
5. Building Water Law (1962)

Measures to preserve water quality

6. Water Quality Conservation Law
7. Factory Effluent Control Law (1958)
8. Water Pollution Control Law (1970)
9. Revision of Sewerage Law (1970)
10. Basic Law for Environmental Pollution (1967)
→ Revised in 1970

"IWRM Spiral" concept model

Progress of IWRM



(3) Period of Stable Growth and the "Bubble" Economy (1973 - 1990)



Drought in Fukuoka, 1978

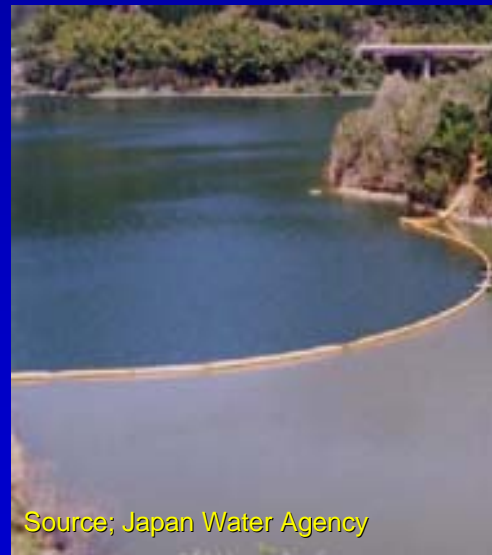
Source; Fukuoka City Water Bureau



Source; Takamatsu City Water Bureau



Source; Foundation of River & Watershed



Source; Japan Water Agency



(3) Period of Stable Growth and the "Bubble" Economy (1973 - 1990)

Need for a nationwide water demand and supply plan, based on a comprehensive, long-term perspective

1. Long-Term Water Demand and Supply Plan (1978)
2. Water Demand in the 21st Century (1982)
3. National Comprehensive Plan for Water Resources (1987) (Water Plan 2000)

Efficient implementation for water resource development such as dam construction

1. Special Measures Act for Reservoir Area (1973)

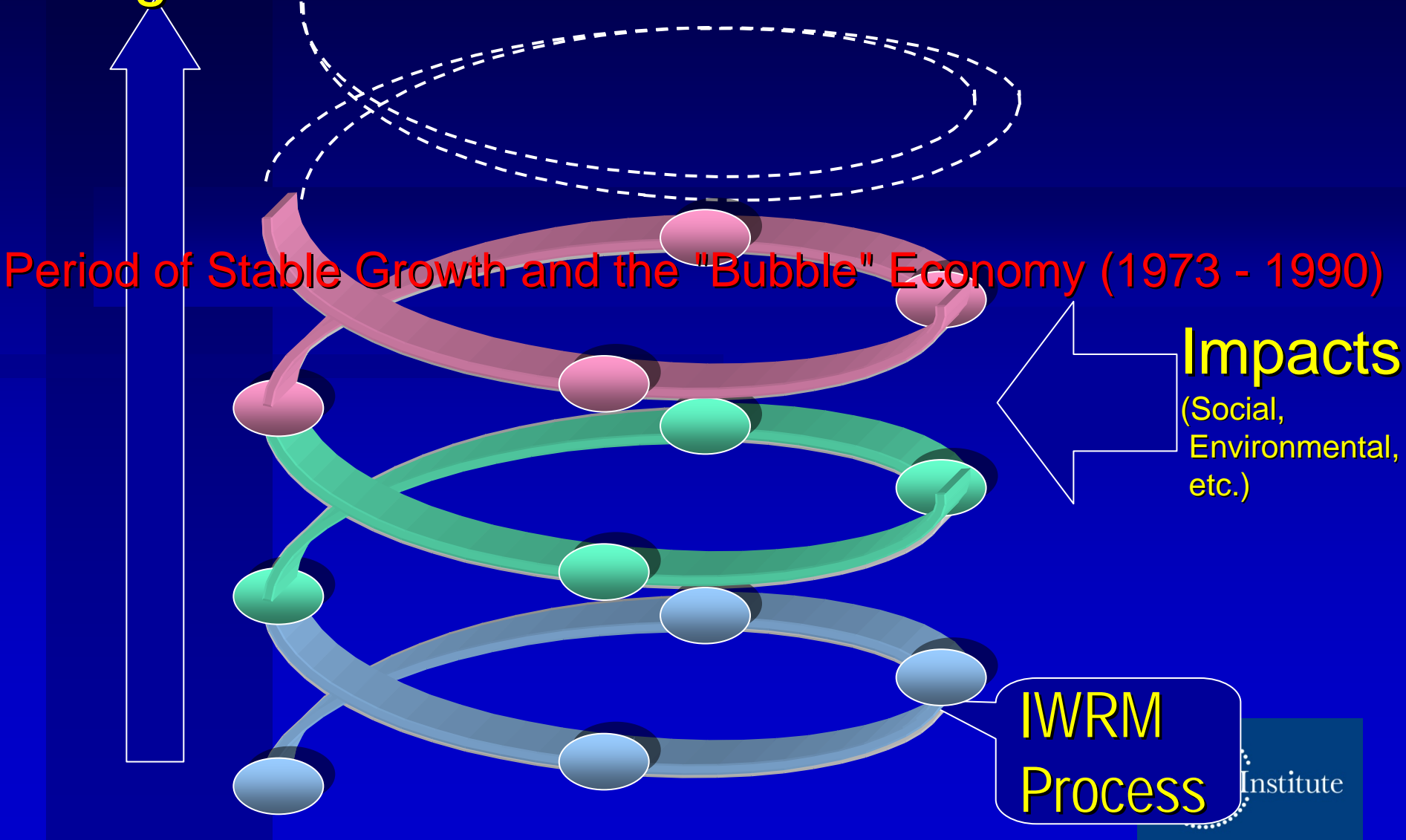
Measures to deal with frequent water shortages

Takamatsu Desert" (1973), Fukuoka Drought (1978), National Winter Drought (1984), Western Japan Winter Drought (1986), Tokyo Metropolitan Winter Drought (1987)



"IWRM Spiral" concept model

Progress of IWRM



(5) Period of the “bubble economy” in the early 1990s to the present



Source; The Sankei Shimbun



Source; Yakushima Town Office

(5) Period of the “bubble economy” in the early 1990s to the present

Consideration for environment and process

1. Basic Environment Law (1993)
2. Environment Impact Assessment Law (1997)
3. Revision of the River Law (1997)

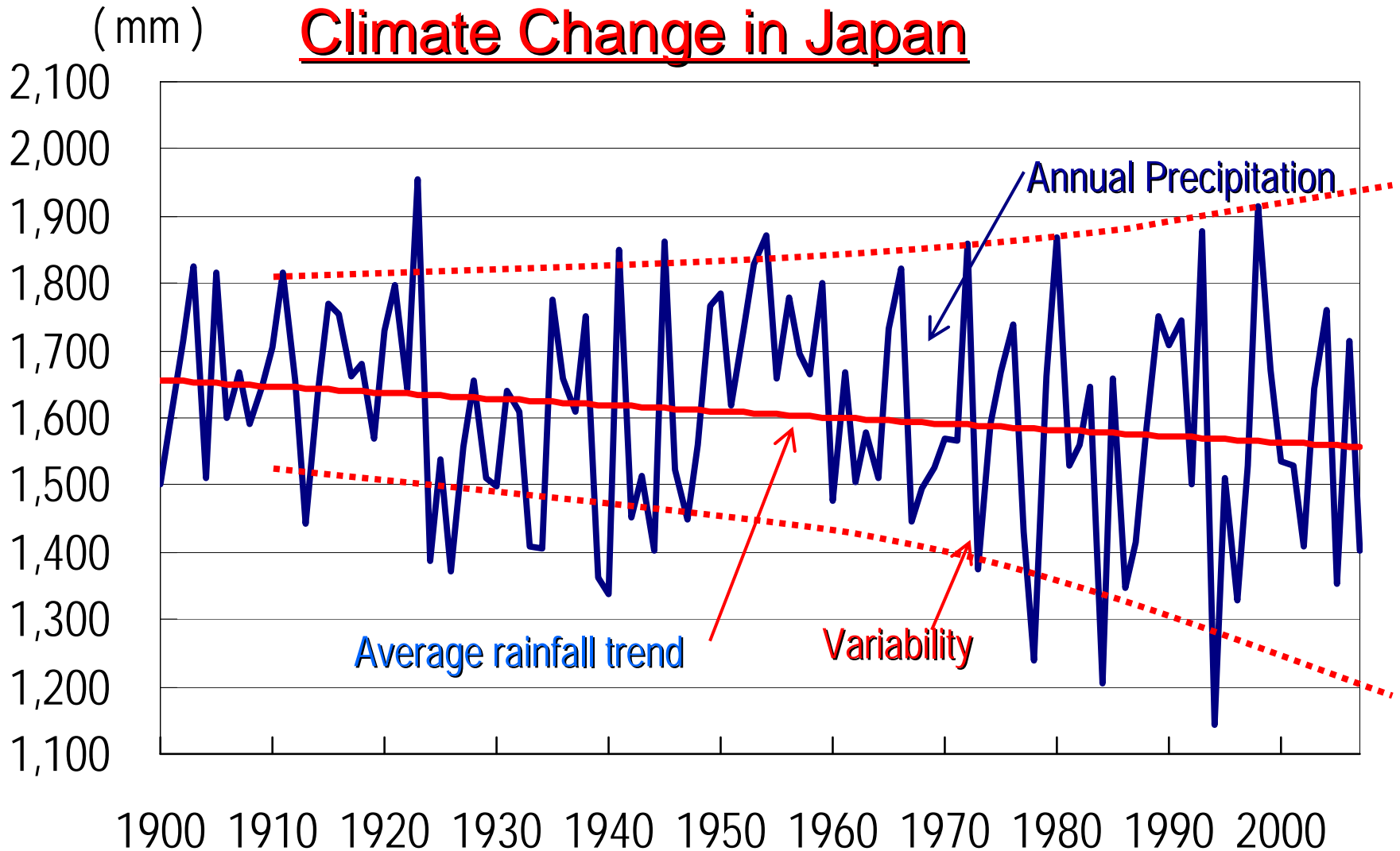
New efforts to secure water resources

- Optimization of facility management
- Diversion of water use rights to different applications
- Reuse of reclaimed water and other

Need for comprehensive efforts

1. New National Comprehensive Plan for Water Resources
2. Government Offices Conference on the Establishment of a Robust Hydrological Cycle (1999)
3. Law for the Focused Planning of Social Infrastructure Improvement (2003)
4. Revision of “Comprehensive National Land Development Law”
“National Land Sustainable Plan Law” (2005)

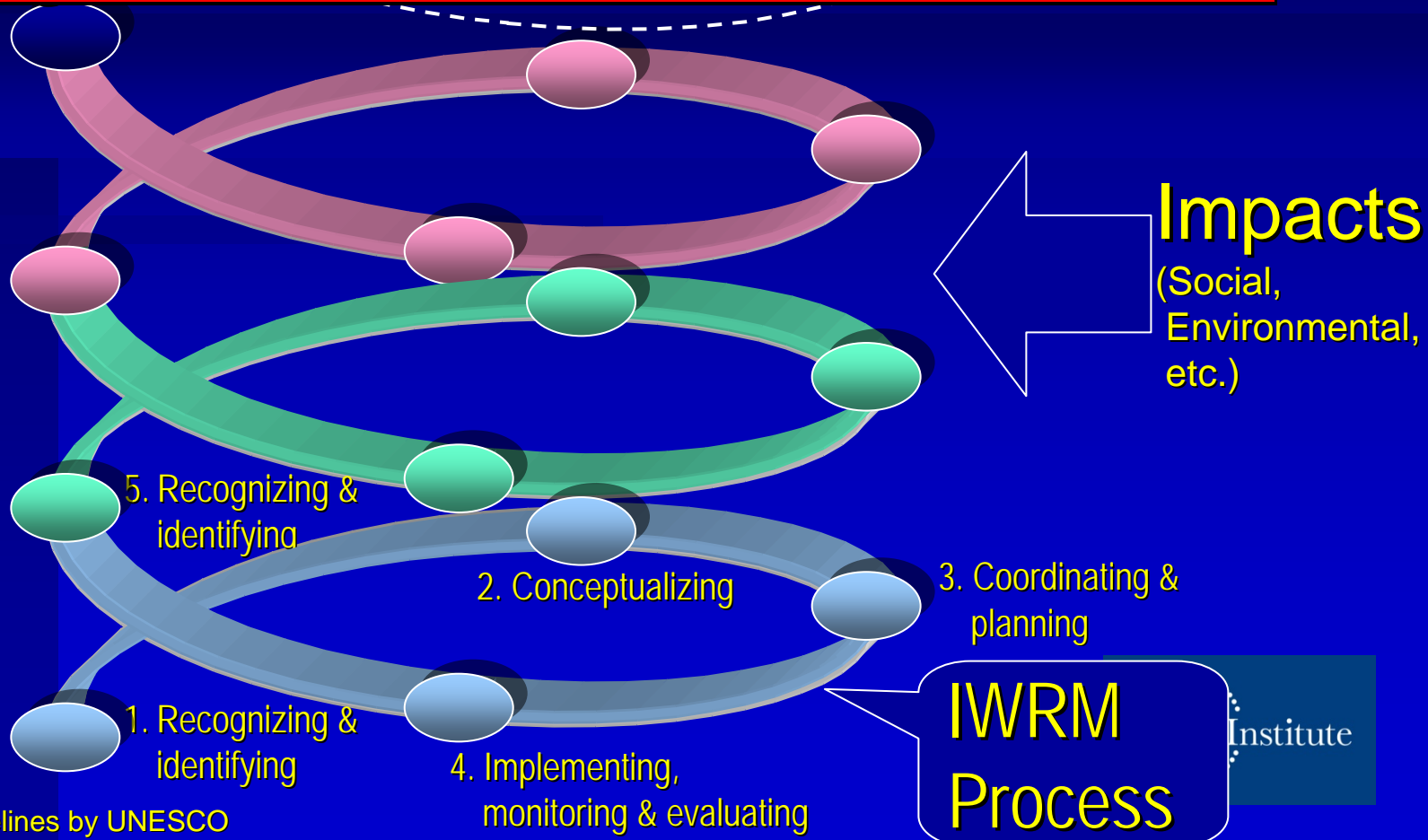
(6) Future



"IWRM Spiral" concept model

Progress of IWRM

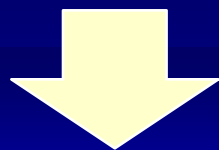
Progress of *Water Governance*



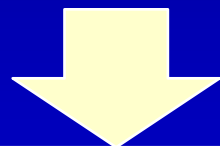
ii Water Resources Management by law

For:

Promotion of water resource development to meet the rapid increase of water demand

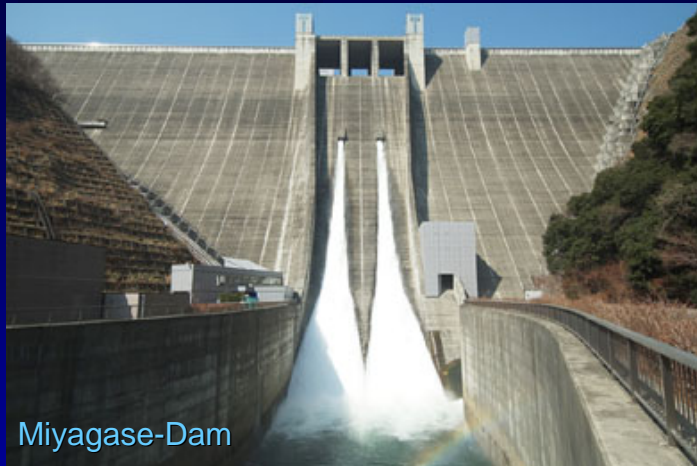


Water Resources Development Promotion Law (1961)
Water Resources Public Corporation Law (1961)



Basic Plan for Water Resource Development
(“Full Plan”) for focused river basin

iii Many measures to implement WRM



- Fixed assets tax
- Grant for Power supply region
- Grant for Water resources region



*Sustainable support system
by **Law***

*Municipality can
develop and maintain
their facilities and
welfare for resident.*

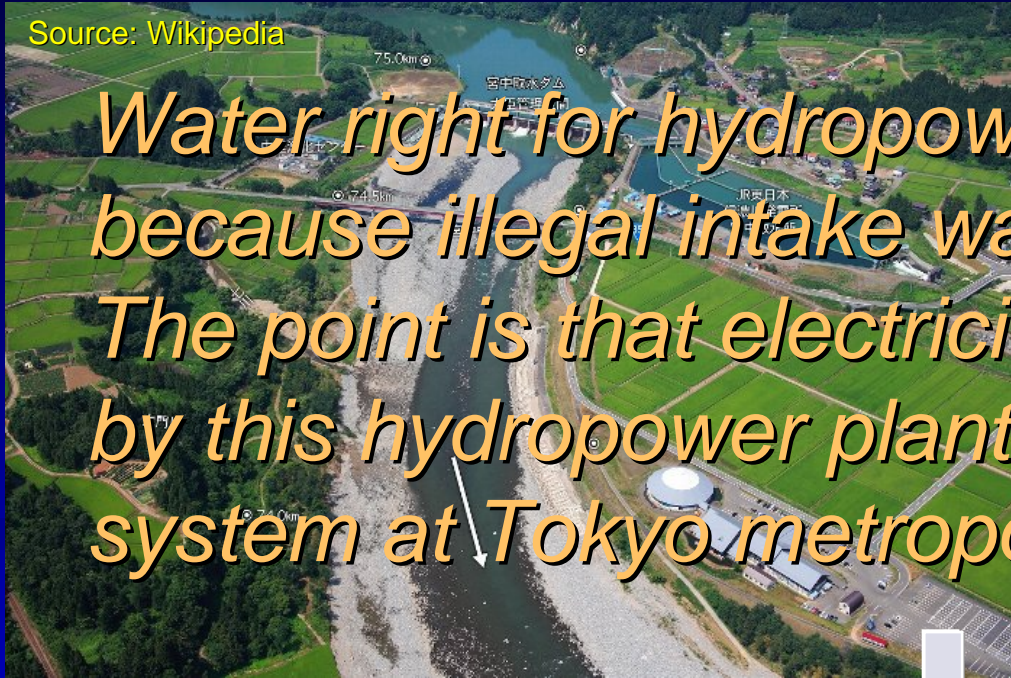


II Implementation of Law

Source: Wikipedia

Water right for hydropower was cancelled because illegal intake was done for 20 years.

The point is that electricity which is generated by this hydropower plant is used for train system at Tokyo metropolitan area.



➤ Necessity of management against illegal action **by law.**

➤ **Accountability** of the authorized river manager.

Miyasato-Dam

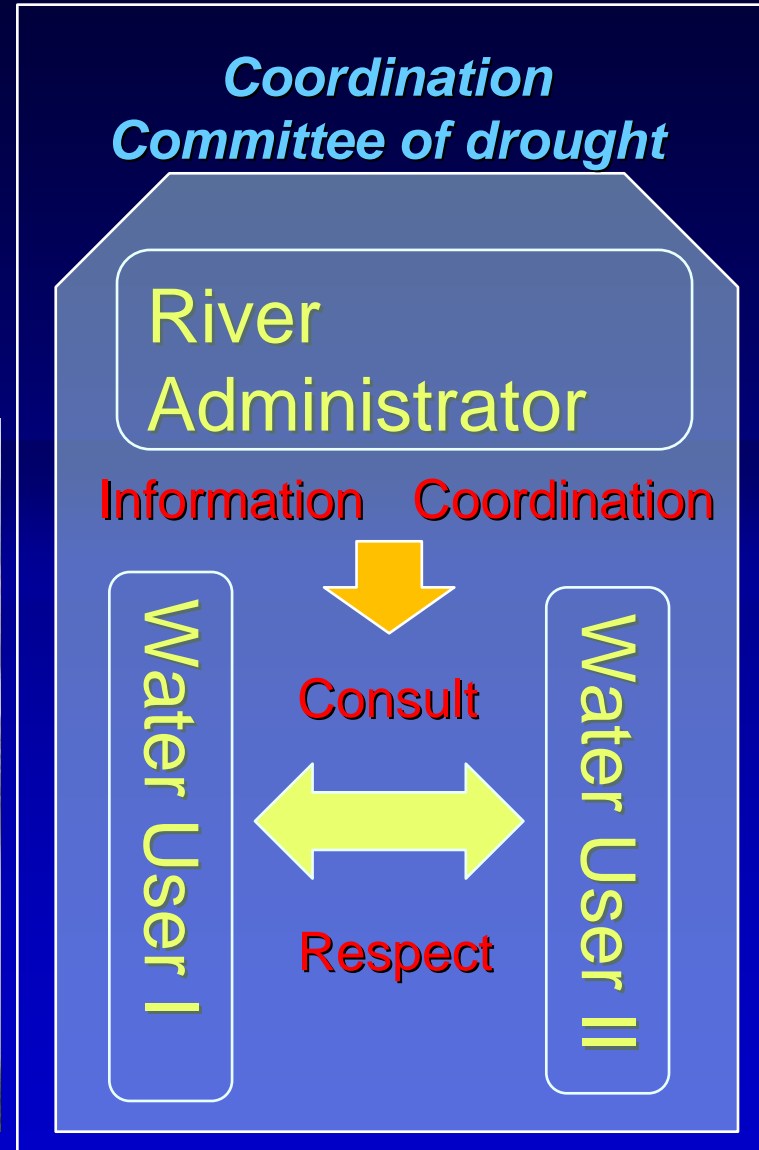
Source: MLIT, Government of Japan

II Implementation of Law

The article of 53rd of River Law
Coordination mechanism in case of drought



Amount of intake is discussed and decided there.



III New Challenges

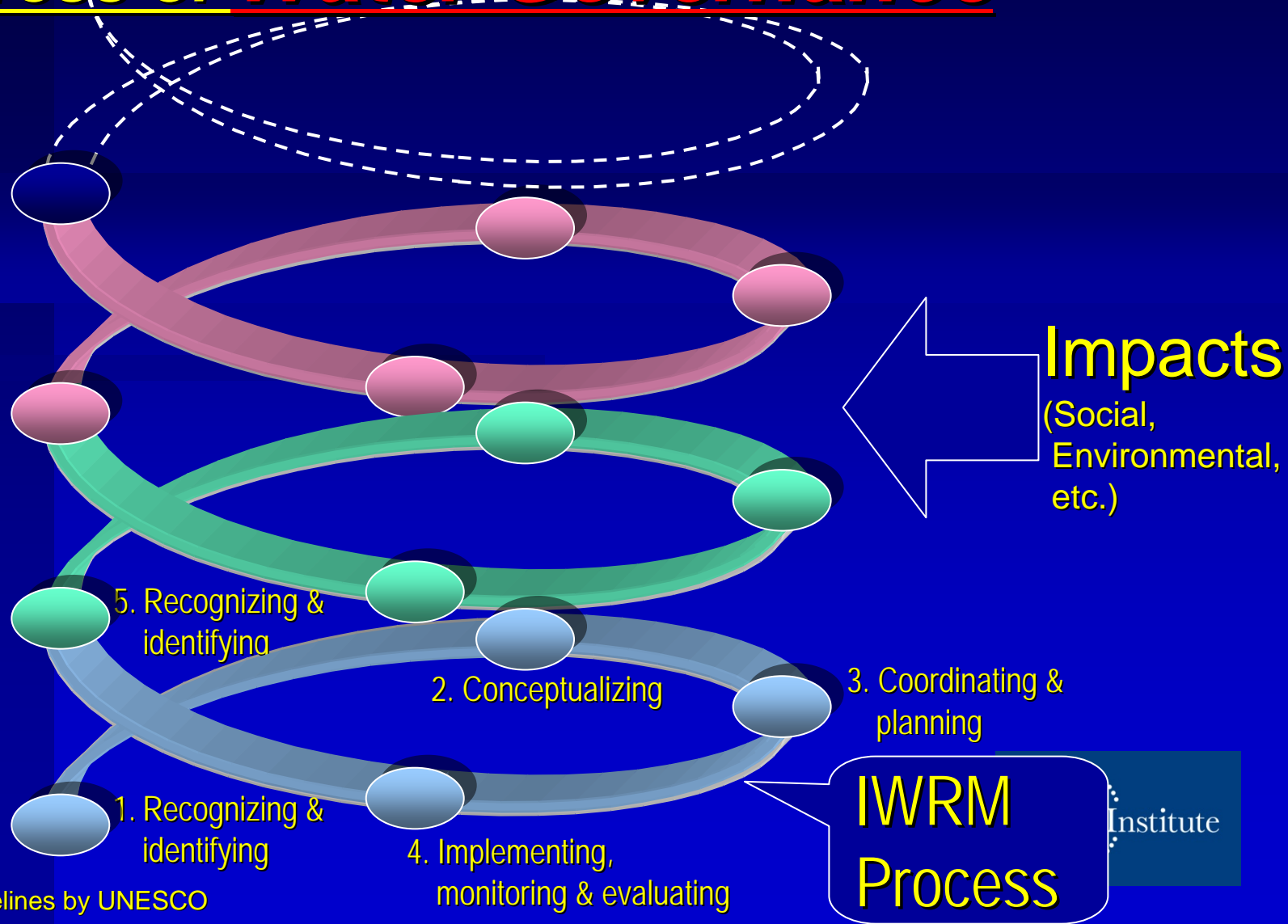
Water Right for Environment



Maintenance of this canal is done by collaboration with local government, farmers association, regional community and volunteer.

"IWRM Spiral" concept model

Progress of *Water Governance*



We lost many things such as “Intact river”.



Source: Wikipedia

Shimanto-river



Source: Koich prefecture



*Thank you very much for
your kind attention.*

More Information

tkawasaki@adbi.org

<http://www.adbi.org>

<http://www.narbo.jp>